



Wandering Resident Management

Protect vulnerable residents

In dementia and high care wards you no longer need to "lock-down" the designated areas in order to protect wandering patients.

With the **Secure Care Products®** wandering resident system vulnerable residents wear wrist-tags that trigger door-side receivers to automatically lock doors and lifts.

Staff and visitors can freely move throughout the facility with an open door policy however wandering patients cannot leave the designated areas.

The Secure Care wandering resident management solution enables aged care facilities to protect their vulnerable dementia residents by discreetly controlling doors and eliminating wandering out of designated areas.

Doors can be left open for staff and visitors to freely move throughout the facility however when a specific resident wearing a wrist-tag comes close to the door, the door can be automatically locked, and an alert can be sent to staff handheld messaging devices (e.g. pagers, DECT/WiFi phones and annunciator panels). Then when the resident moves away from the door it will then be automatically unlocked.

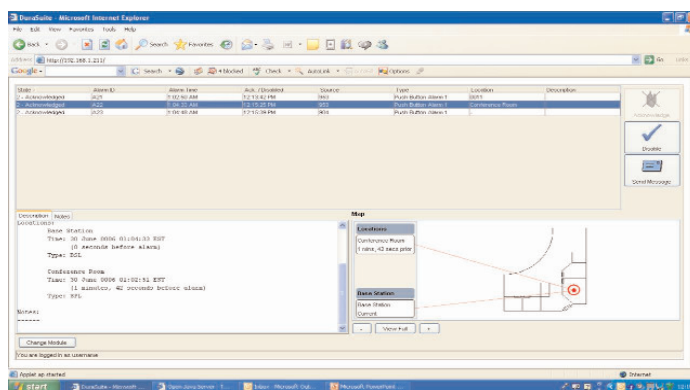
Staff wishing to escort residents outside the designated area can key in an "escort code" on the door-side control panel to open the door and enable the resident to leave with them.

In the event of a fire alarm, all doors will be automatically opened, to allow staff and patients to freely leave the designated area.

Each door-side panel has battery backup so that it can still operate during a power failure.



The Secure Care system operates on a reliable solid state operating system and does not rely on PCs. Secure Care is fully integrated with DURAsuite for the distribution and escalation of alerts and alarms.



Integrated Wireless Pty. Ltd.
Locked Bag 50
Strawberry Hills
NSW 2012

Internet:
Email:
Phone:
Fax:

www.integratedwireless.com.au
sales@integratedwireless.com.au
+61 2 9698 9000
+61 2 9698 2749