

## Charging Racks T962M, T962E and T963

### Features

- Used for charging and storing U922 and U922K
- T962M and T962E has quick charging mode, 1 hour
- Can sense what type of battery the pocket unit is equipped with
- Can indicate absence\*
- Can report the status of the transceiver's parameters\*
- Can be used for programming or reprogramming the transceiver's parameters\*
- Charging Rack Support available for modular mounting



\* Only T962M or T962E interconnected with T962M

### General

Charging racks T962M, T962E and T963 are designed for storing and charging the transceivers U922 and U922K. The charging racks T962M and T962E can hold up to four transceivers each, while the T963 is a single transceiver charger designed for desk use.

In a system, T962M is used as a master charger and the T962E as an extension charger, although T962E can be used as a stand-alone unit.

Besides charging and storing, the T962M and T962E connected to a T962M, can indicate absence and be used for programming and re-programming U922/U922K transceiver's parameters.

### Application

Charging racks T962M and T962E

Charging rack T962M communicates with other units within the system by using A or B bus. This makes it possible for the system to have direct contact and supervision of the charging rack and the items stored in it.

Charging rack T962E is often used as an extension rack. However, it is equipped with electronics and can be used as stand alone-unit, the messages are then stored in the transceiver and presented when the transceiver is removed from the rack.

Both T962E and T962M are equipped with an internal bus, which they use when interconnected. Only one T962E can be used as an extension to the T962M.

### Charging rack T963

Charging rack T963 is available in two versions: Version A, the T963 charges the transceiver without interrupting any of its functions and Version B, the transceiver when put in storage stores the messages in the transceiver and present them when it is removed from the charging rack. Charging rack T963 version A can also indicate absence.

When the stored transceiver is on charge a red LED is illuminated, when it is charged the red colour is changed to green.

### Charging Rack Support T962HD

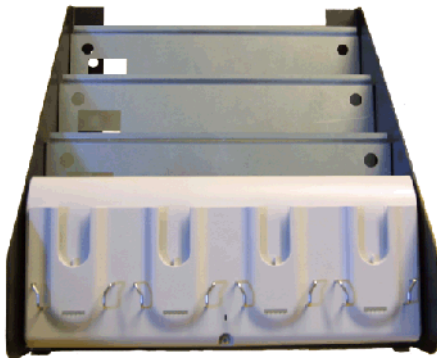
The Charging Rack Support module is an accessory for T962M/E. It makes it possible to mount a high number of charging racks on limited surfaces, for example on top of each other when the wall space is not wide enough. A power supply can also be mounted which supports four charging rack units.

*Technical specification are listed on following page.*

## Technical Specifications

	<b>T962M</b>	<b>T962E</b>	<b>T963</b>
Dimensions	149 x 345 x 50 mm	149 x 345 x 50 mm	109 x 76 x 69 mm
Weight	800 g	750 g	105 g
Case	PC/ABS, light grey	PC/ABS, light grey	PC/ABS, light grey
Operation temperature	+10°C – +40°C	+10°C – +40°C	+10°C – +40°C
Supply voltage	10–15 Vdc	10–15 Vdc	10–15 Vdc
Current consumption	maximum 1 A	maximum 1 A	maximum 1 A
External connection	Screw terminals and modular connectors	Screw terminals and modular connectors	DC plug

## Accessories



### **T962HD Charging Rack Support**

Dimensions:	290 x 305 x 300 mm
Weight:	6.6 kg (total weight with charging racks)
Power Supply (switched)	230 V / 12.5 V DC, 5 A (ordered separately)
Order No:	541419
Charging Racks:	4 pc T962M/E (ordered separately)